



# **EMERGING TRENDS**




FORECASTING AND TRENDS OFFICE

JULY 2022

9<sup>OUT</sup> OF 10

FLORIDIANS

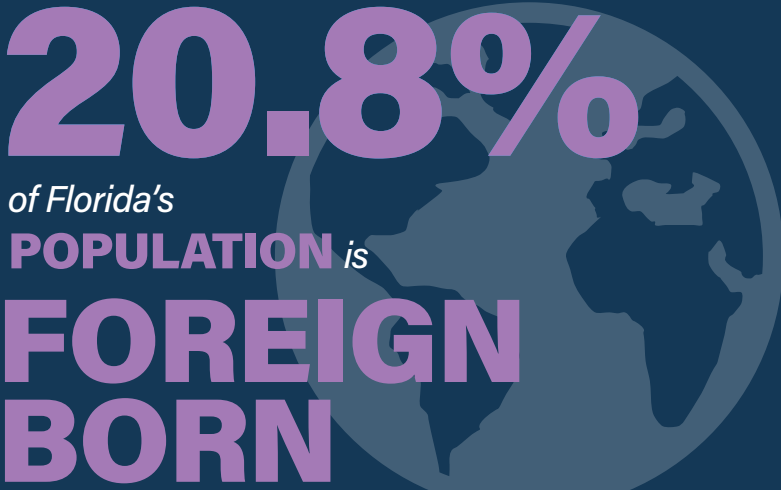
live in URBAN AREAS



20.8%

of Florida's POPULATION is


FOREIGN BORN



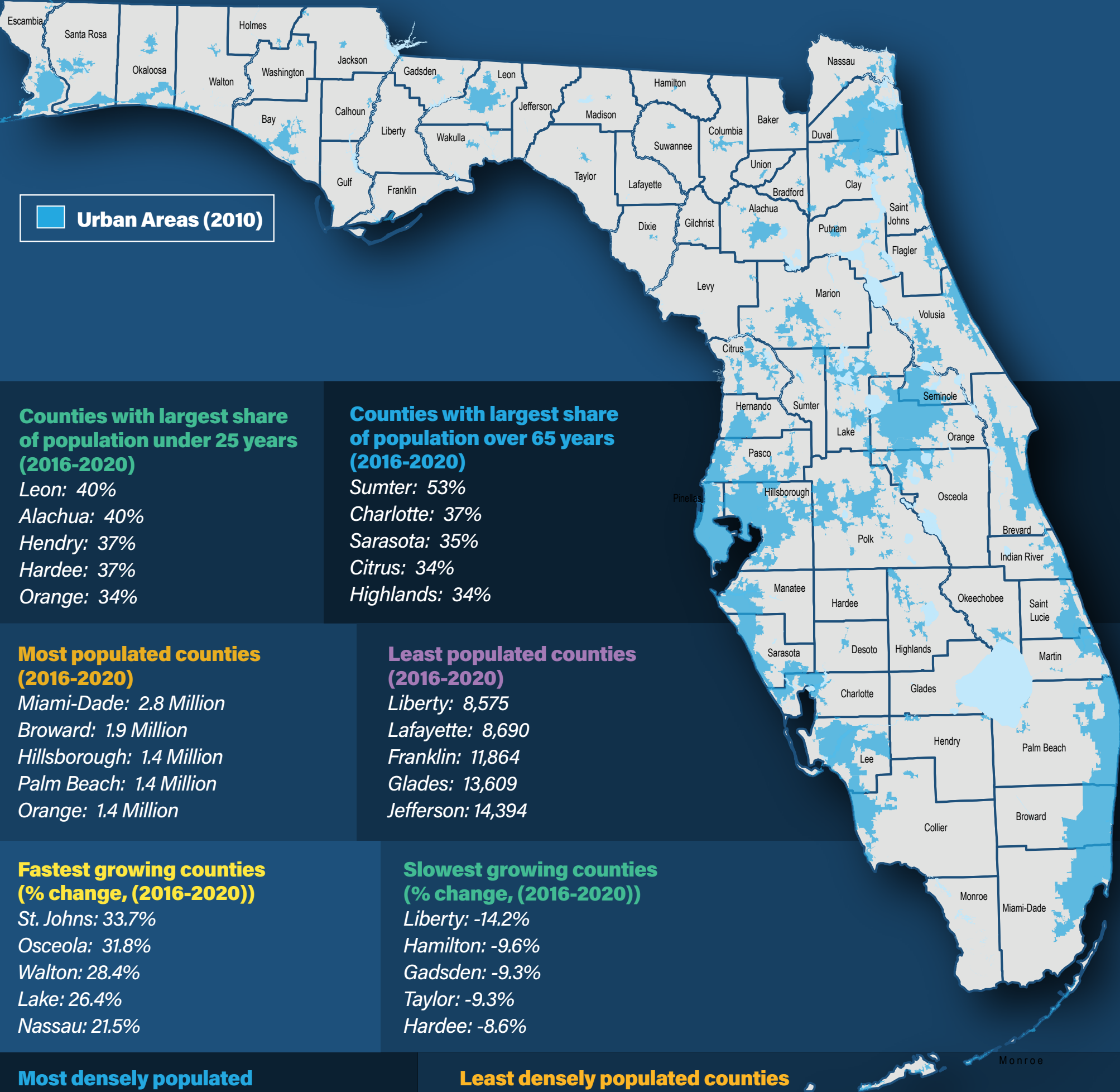
6.9%

of Florida's households are

LIMITED ENGLISH SPEAKING



FLORIDA'S URBAN AREAS



Counties with largest share of population under 25 years (2016-2020)

- Leon: 40%
- Alachua: 40%
- Hendry: 37%
- Hardee: 37%
- Orange: 34%

Counties with largest share of population over 65 years (2016-2020)

- Sumter: 53%
- Charlotte: 37%
- Sarasota: 35%
- Citrus: 34%
- Highlands: 34%

Most populated counties (2016-2020)

- Miami-Dade: 2.8 Million
- Broward: 1.9 Million
- Hillsborough: 1.4 Million
- Palm Beach: 1.4 Million
- Orange: 1.4 Million

Least populated counties (2016-2020)

- Liberty: 8,575
- Lafayette: 8,690
- Franklin: 11,864
- Glades: 13,609
- Jefferson: 14,394

Fastest growing counties (% change, (2016-2020))

- St. Johns: 33.7%
- Osceola: 31.8%
- Walton: 28.4%
- Lake: 26.4%
- Nassau: 21.5%

Slowest growing counties (% change, (2016-2020))

- Liberty: -14.2%
- Hamilton: -9.6%
- Gadsden: -9.3%
- Taylor: -9.3%
- Hardee: -8.6%

Most densely populated counties (people per square mile) (2016-2020)

- Pinellas: 3,504
- Broward: 1,617
- Orange: 1,585
- Seminole: 1,522
- Hillsborough: 1,428

Least densely populated counties (people per square mile) (2016-2020)

- Liberty: 10
- Glades: 15
- Lafayette: 15
- Taylor: 21
- Franklin: 23



REGIONAL & LOCAL

NOW

Florida's **NONFARM EMPLOYMENT** was over **9 MILLION JOBS** in April 2022

Florida's 2020 median **HOUSEHOLD INCOME** was **\$57,703**

**12.4%** of Florida households lived **BELOW THE POVERTY LINE** in 2021

Florida's **UNEMPLOYMENT RATE** was **3.0%** IN SECOND QUARTER 2022

**6%** of households in Florida **DO NOT OWN A VEHICLE** while another **39%** own only **ONE VEHICLE**

**TRANSPORTATION** is the **FOURTH HIGHEST COST** for a **FAMILY OF FOUR** in Florida

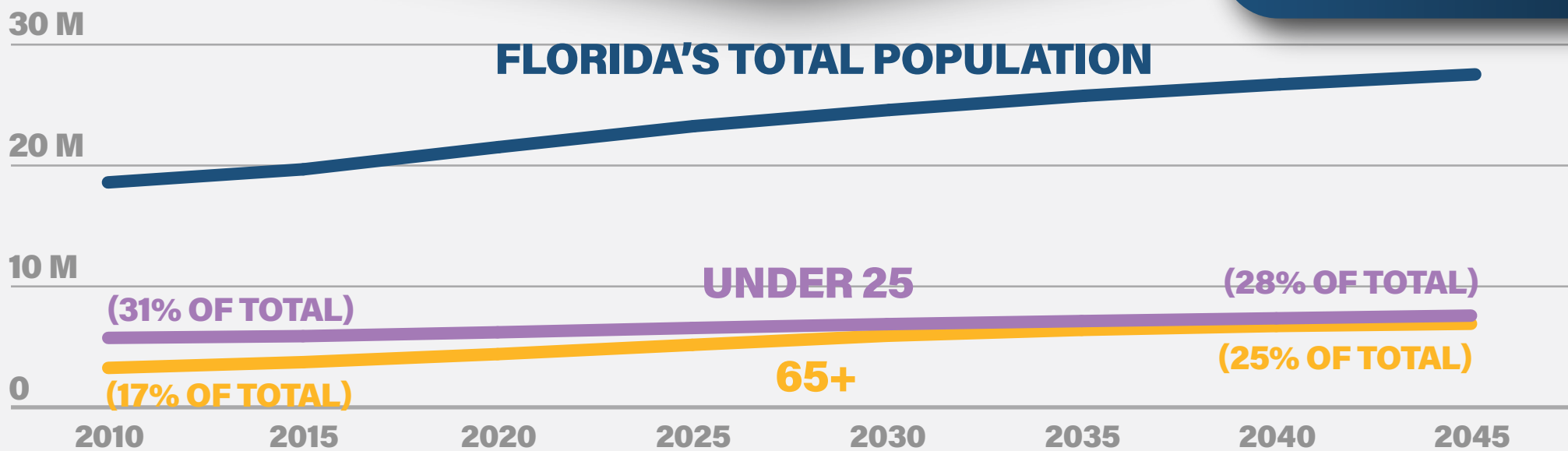
**20%** of Floridians have a commute time **UNDER 15 MINUTES**  
**18%** of Floridians have a commute time of **45 MINUTES OR LONGER**

TRANSPORTATION CHOICES

Motorcycle Endorsements 2016-2020 <b>+11%</b>	Walked to Work 2016-2020 <b>-7%</b>	Transit Revenue Miles 2016-2020 <b>+8%</b>	Average Commute Time 2016-2020 <b>+4%</b>
Bicycling to Work 2016-2020 <b>-14%</b>	Interregional Rail Passengers (SunRail/Tri-Rail) 2016-2020 <b>-39%</b>	Working from Home 2016-2020 <b>+26%</b>	Total Population 2016-2020 <b>+7%</b>

**78.6%** of Florida's **ANNUAL PERSON TRIPS** is for **FAMILY OR PERSONAL BUSINESS, SCHOOL, RECREATIONAL OR SOCIAL PURPOSES**

NEXT



**60%** of Florida's **POPULATION GROWTH** between 2021 and 2050 is projected to be concentrated in **10 COUNTIES**  
[ Orange, Hillsborough, Miami-Dade, Lee, Palm Beach, Broward, Polk, Osceola, Duval & Pasco ]

Florida's **65+ POPULATION** is projected to **GROW BY 73%** by 2045

**67% OF AGING ROAD USERS** (age 65+) are **OUTLIVING THEIR ABILITY TO DRIVE** by an average of **7-10 YEARS**

Florida is projected to add **580 PEOPLE EVERY DAY** for the next **30 YEARS**

INCREASING DIVERSITY (PROJECTED GROWTH BY RACE)

Non-Hispanic White	+12%
Non-Hispanic Black	+57%
Hispanic	+102%
Other	+66%

STATE & INTERREGIONAL

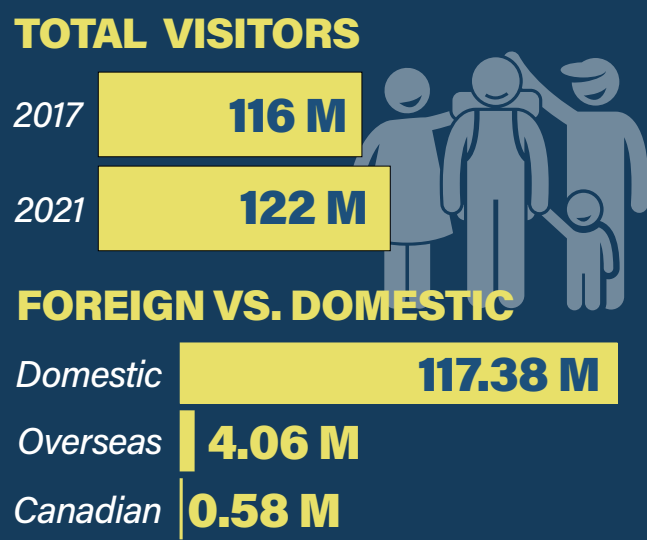
NOW

Florida has GDP of **\$1.2 TRILLION** ranking **4TH** among all states

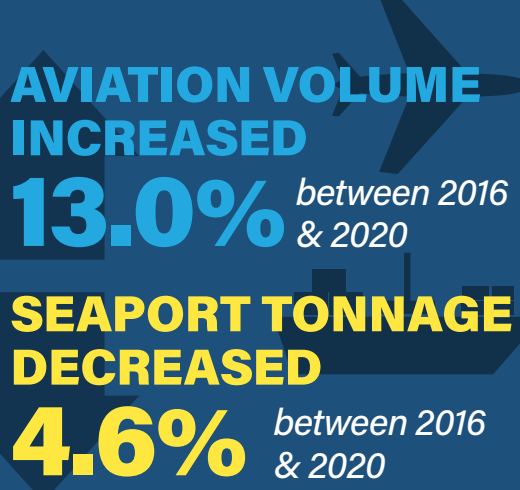
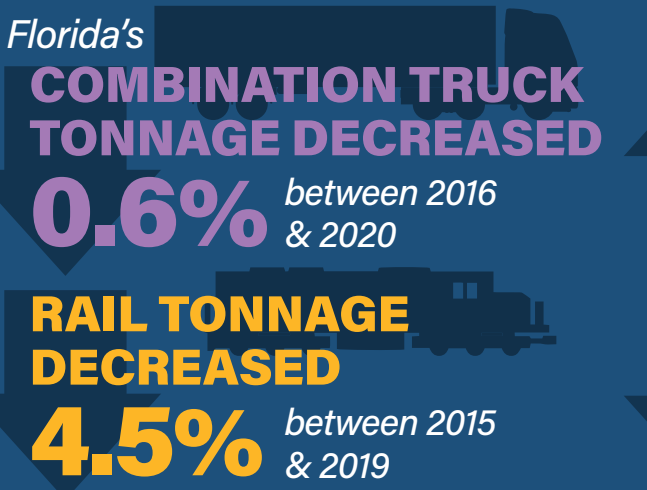
If Florida were an independent country, it would rank **15TH** in the world

Florida has a population of **21.5 MILLION** today, ranking **3RD** among the states

**MIGRATION** from other states and nations accounted for **32%** of **POPULATION GROWTH** between 2010 & 2020



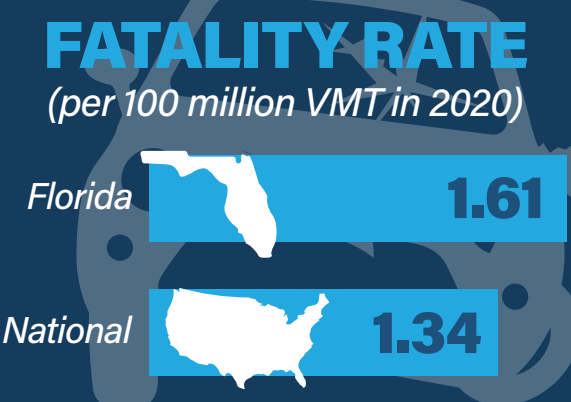
**36%** of Florida's visitors **ARRIVE VIA AIR**



For 2021 Florida's total merchandise trade was **\$164.1 BILLION**

<b>\$89.4 B IMPORT</b>	<b>\$74.7 B EXPORT</b>
------------------------	------------------------

Florida is home to **21** U.S. military bases with more than **65,000** active military personnel









Florida manufacturers employed **382,000 WORKERS** in 2020, producing **\$56 BILLION** IN OUTPUT

Florida's population is projected to grow from **21.5 MILLION** in 2020 to **27.8 MILLION** residents in 2050

An increase of **29%**

The total number of **OUT-OF-STATE VISITORS** to Florida is projected to **INCREASE 55%** between 2019 and 2031

FLORIDA'S 2030 GOALS

 GLOBAL RANKING FOR GROSS DOMESTIC PRODUCT	<b>10th</b>	<b>\$92B</b>	ORIGIN GOODS EXPORTS TO GLOBAL MARKETS	
 TRADE, LOGISTICS, & MANUFACTURING JOBS	<b>1.3M</b>	<b>\$129B</b>	SERVICES EXPORTS TO GLOBAL MARKETS	
 U.S. RANKING FOR MANUFACTURING OUTPUT	<b>5th</b>	<b>4.8%</b>	RURAL COUNTIES' SHARE OF FLORIDA GDP	



# RESILIENCE

NOW

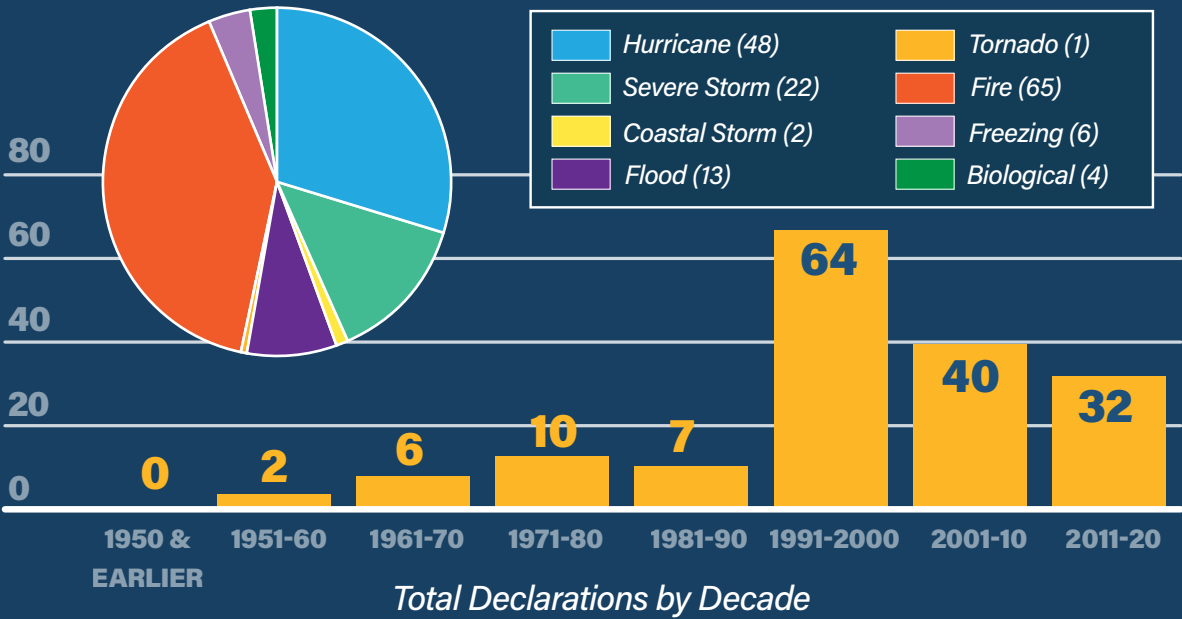
Florida has a **HIGHER FREQUENCY OF TORNADOES** per 10,000 square miles **THAN ANY OTHER STATE**

There are **15 MILLION PEOPLE** living in Florida's **COASTAL COUNTIES**

**3 OUT OF 10** Florida regions have a **SHORTAGE OF SHELTER SPACE** for the general population

**5 REGIONS** have a shortage of shelter space for **SPECIAL NEEDS POPULATIONS**

## FEDERAL EMERGENCY MANAGEMENT AGENCY TOTAL DECLARATIONS



## HURRICANE MICHAEL

October 2018

**35** counties evacuated  
**375,000** residents affected  
**\$5.8 BILLION** in estimated insurance loss



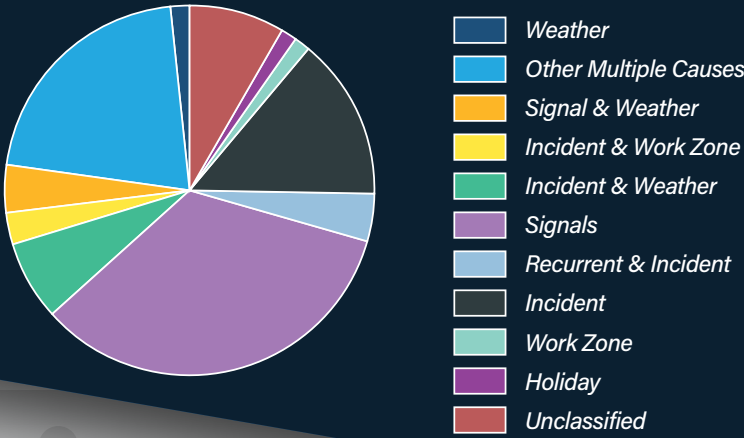
## HURRICANE IRMA

September 2017

**54** counties evacuated  
**6.8 MILLION** residents affected  
**\$11.1 BILLION** in estimated insurance loss

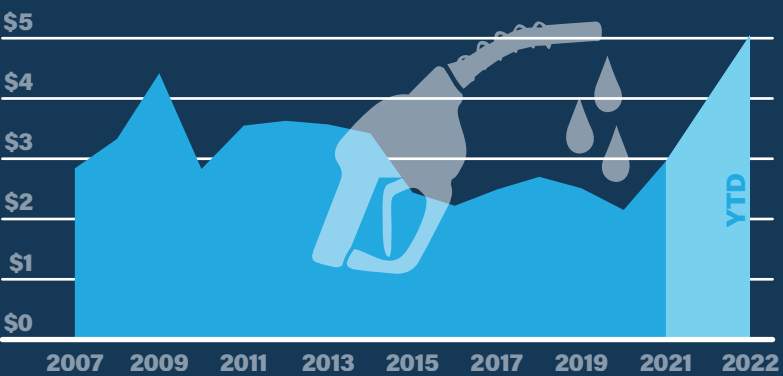
Since 2000, **TIDAL FLOODING** across Florida has **INCREASED BY 352%**, while sea levels are rising about **1 INCH EVERY THREE YEARS**

## SOURCES OF CONGESTION



In Florida, **INCIDENTS, WEATHER, CONSTRUCTION, AND OTHER SPECIAL EVENTS** account for **46% OF CONGESTION**

## AVERAGE ANNUAL FUEL PRICES IN FLORIDA



NEXT

## INFLATION IS AT A 40-YEAR HIGH

After **LOSING 1.2M JOBS** in early 2020, Florida has **GAINED BACK ALL LOST JOBS** and **ADDED AN ADDITIONAL 223,000 JOBS**

The increasing **GLOBAL INTEGRATION** of Florida's economy means our **TRADE, TOURISM, AND OTHER INDUSTRIES** can be impacted by recessions, instability, and supply chain disruptions around the world

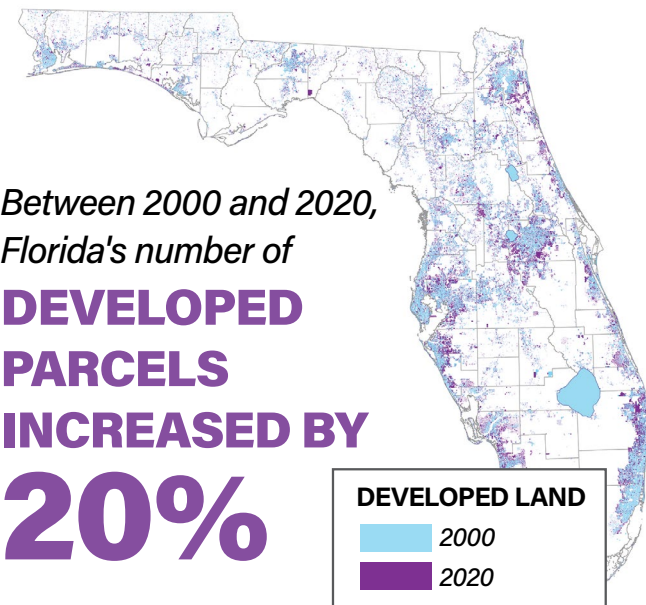
More than **1/2** OF ALL JOBS COULD BE AUTOMATED TODAY using current technologies

Up to **85% OF ALL JOBS** in 2030 could be in industries or occupations that **DO NOT EXIST TODAY**

Statewide partner studies of potential future development in the year 2070 project between **3.5 MILLION & 5.4 MILLION ACRES** of **ADDITIONAL LAND** could be developed

Florida can expect between **2.2 AND 2.5 INCHES OF SEA LEVEL RISE** between 2020 and 2030

\*Depending on Location, NOAA Low Projection (2022)



# TECHNOLOGY

NOW

More Floridians

**WORK FROM THEIR HOMES**  
than **USE PUBLIC TRANSIT**  
for their commute to work



**TELEHEALTH USE  
HAS INCREASED**

**38X**

from the  
pre-COVID 19  
baseline



**52%**

of college students  
took at least one  
**ONLINE COURSE**  
from 2019-2020



**85.4%**

of Florida households have a  
**BROADBAND INTERNET  
CONNECTION**

**98.9% & 86.1%**

of urban areas & of rural areas

have **3 OR MORE  
SERVICE PROVIDERS**



Inner city  
trips with

**SHARED  
BICYCLES &  
E-SCOOTERS**

have risen

**60%**

**YEAR-OVER-YEAR**



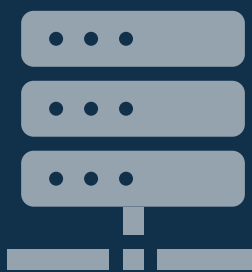
The  
**TOTAL AMOUNT  
OF DATA**  
consumed in 2021 was

**79  
ZETTABYTES**

and is projected to be over

**180  
ZETTABYTES**

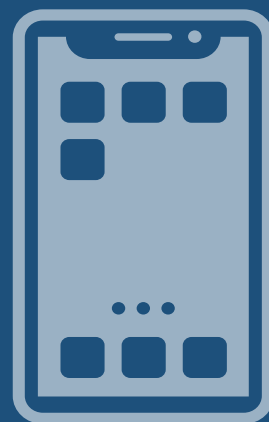
by 2025



Globally,

**84%**

of **MOBILE  
CONNECTIONS**  
will be with  
**SMARTPHONES**  
in 2025



E-commerce has more than

**TRIPLED**

in the U.S. since 2019



24 states allow level 4

**AUTONOMOUS SEMI-TRUCK  
COMMERCIAL  
DEPLOYMENT**



By 2030, nearly half of

medium- and heavy-duty trucks will be

**CHEAPER TO BUY, OPERATE,  
AND MAINTAIN AS ZERO  
EMISSIONS VEHICLES**

By 2030,

**AUTOMOBILE MANUFACTURERS**  
are expecting upwards of

**50%**

of global vehicle sales  
will be **ELECTRIC**

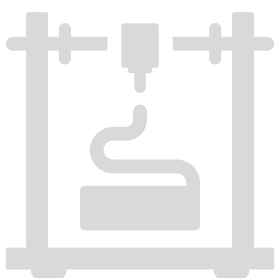


Globally, the majority of new cars shipped  
will be equipped with embedded

**CONNECTIVITY TECHNOLOGY**

in 2023, and the share of

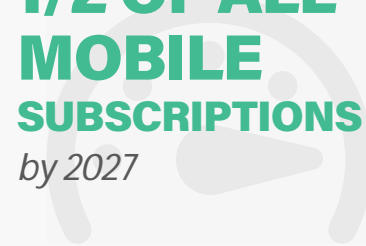
**CONNECTED CARS** will account for nearly  
**3/4 OF ALL CARS SOLD BY 2025**



NEXT

**5G** will account  
for nearly

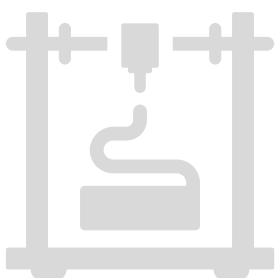
**1/2 OF ALL  
MOBILE  
SUBSCRIPTIONS**  
by 2027



In 2019, the **GLOBAL ADDITIVE MANUFACTURING  
MARKET SURPASSED \$10 BILLION**

and is suspected to

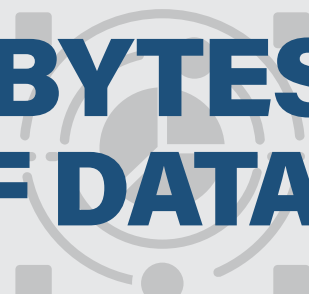
**DOUBLE EVERY  
3 YEARS**



By 2025, it is estimated that more than

**171 ZETTABYTES  
(171 X 10<sup>21</sup>) OF DATA**

will be generated annually



**AMAZON AIR**  
would put

**70%**

of the  
**U.S.  
POPULATION**  
within  
**NEXT-DAY  
REACH**



By 2030,

**URBAN AIR  
MOBILITY**

could provide

**750 MILLION  
PASSENGER  
FLIGHTS**

per year



**COMMERCIAL SPACE  
STATIONS**

may be developed in  
**low earth orbit** as early as 2025



UPS used **DRONES TO DELIVER**

**COVID-19 VACCINES** in Winston Salem, North Carolina.

**DRONES WERE ALSO USED TO DELIVER**

**PRESCRIPTION MEDICATION** in The Villages, Florida.







FORECASTING AND TRENDS OFFICE

Brian Watts

Florida Department of Transportation  
605 Suwannee Street, Mail Station 28  
Tallahassee, Florida 32399-0450

850-414-4818 // [Brian.Watts@dot.state.fl.us](mailto:Brian.Watts@dot.state.fl.us)

[www.fdot.gov/planning/fto](http://www.fdot.gov/planning/fto)

**SOURCES**